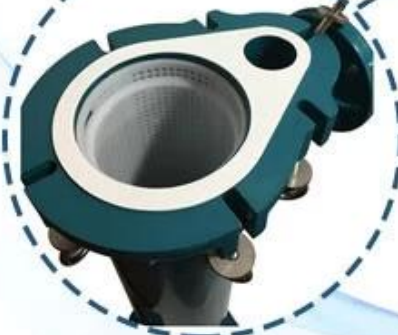




- Better sealing effect, prevent leakage
- Easier replace the filter bag, lower operating cost
- Adjustable installation height to meet specific application occasions
- Large effective filtration area and higher filtration efficiency
- Longer filter bag service life
- Reasonable structure, more stable and reliable filtration
- China GB-150, International ASME, CE Pressure Standards



- Filter different chemical **acid** and **alkali** liquids
- No seam, no dead angle, precise specification
- Smooth surface, no groove, no dead angle, easy to clean
- Can withstand **high temperature** and **high pressure**
- High quality, high efficiency, economical & practical



- Suitable for high capacity & large flow filtration
- Provided 3 ~ 24 bags design structure
- Equipped with standard size flange
- Flow from 120 to 960 cubic/hours
- Excellent welding quality, safe and reliable

Our Factory



Exhibition Photos



Our Certificates





Tel: 024 2318 0188-899

Email/Skype: ivory@rksfluid.com

Mobile/WhatsApp/Wechat: +86 15140071761

Add: Pump & Valve Industrial Park, No. 5 Panwu Road,
Liaozhong Dist. Shenyang, Liaoning P.R. China

□□□□ □□

Q1 : □□□ □□□ □□□ □□?

A1 : □□ □□□□ □□, □□, □□□□ □□□□□□.

Q2 : □□ □□?

A2 : □□□□ □□ 5-10 □, □□□□ □□ 15-90 □ □□ □□□.

Q3 : □□ □□?

A3 : T / T 30 % □□, □□ □□ □□ □□ □ □□. □□ □□□□□□.

Q4 : □□□□ MOQ? □□ □□□□ □ □ □□□□?

A4 : 1 1 , 1 1 . 1 1 .

Q5 : 1 1 ? 1 1 1 1 1 1 1 1 ?

A5 : 1 1 , 100 % 1 . 1 1 1 1 1 1 1 1 .

Q6 : 1 1 1 1 1 1 1 1 1 1 ?

A6 : 1 , 1 1 1 1 1 , 1 1 1 1 1 1 , 1 1 1 1 1 1

Q7 : 1 1 1 1 1 ?

A7 : 1 1 . 1 1 1 1 1 , 1 1 1 1 1 .