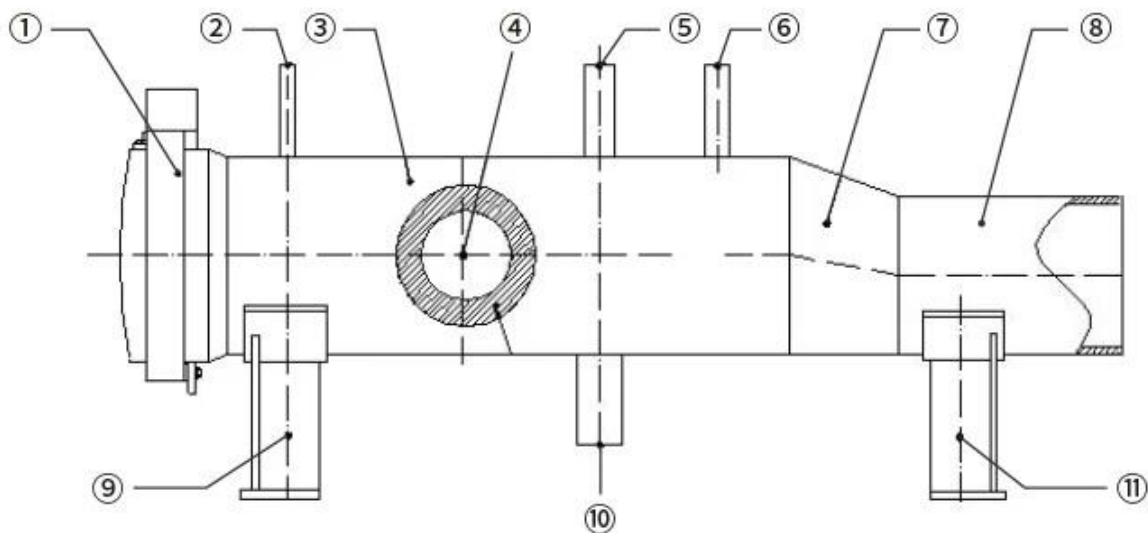


The ***pig launcher and receiver*** is an essential component in long-distance pipeline systems, designed to safely launch and receive pipeline pigs without interrupting the flow. This system is widely used in pipeline systems for oil, gas, and water treatment. With a modular structure and robust corrosion and pressure resistance, it can be customized for different pipeline requirements.

Key Feature:

- 1. Rapid pig launching and receiving reduces downtime and improves pipeline efficiency
- 2. Compatible with foam, brush, and intelligent pigs
- 3. Multiple safety mechanisms ensure secure operation
- 4. Modular structure allows for easy installation, disassembly, and maintenance
- 5. Available in carbon steel or stainless steel for high pressure and corrosive environments
- 6. Customizable according to pipeline diameter, medium, and operational method



- | | | | |
|----------------------------|---------------------------|------------------|-------------------------|
| (1) Quick opening closure | (2) Pressure gauge nozzle | (3) Cylinder | (4) |
| Inlet and outlet nozzle | (5) Safety valve nozzle | | |
| (6) Vent valve nozzle | (7) Reducer | (8) Sub-cylinder | (9) Fore saddle support |
| (10) Blowdown valve nozzle | (11) Rear saddle support | | |



RKSfluid
www.rksfluid.com

RKSfluid (Shenyang) Flow Control Company



SGS CE WRAS