

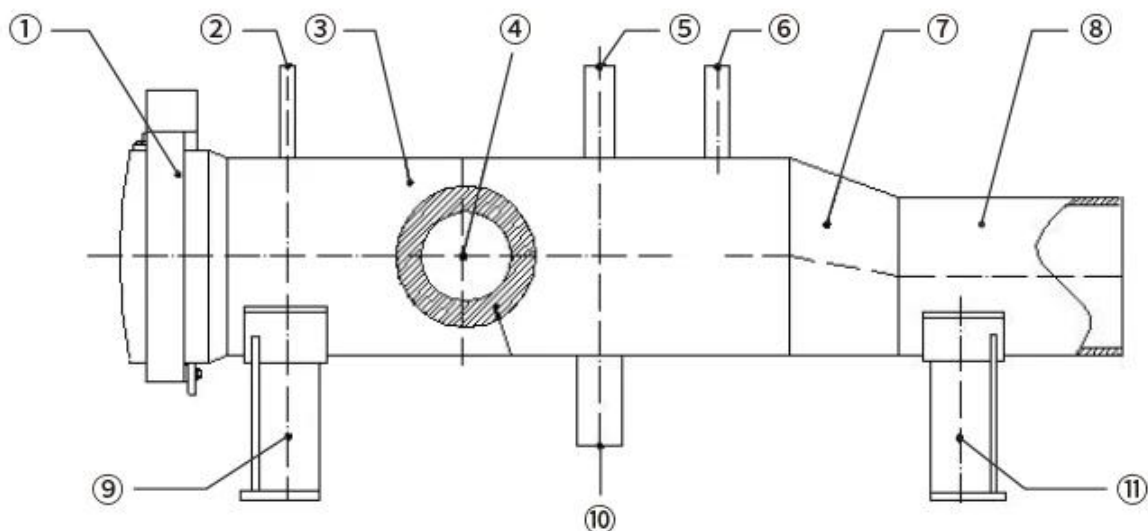


The **pig launcher and receiver** is an essential component in long-distance pipeline systems, designed to safely launch and receive pipeline pigs without interrupting the flow.

This system is widely used in pipeline systems for oil, gas, and water treatment. With a modular structure and robust corrosion and pressure resistance, it can be customized for different pipeline requirements.

#### **Key Feature:**

1. Rapid pig launching and receiving reduces downtime and improves pipeline efficiency
2. Compatible with foam, brush, and intelligent pigs
3. Multiple safety mechanisms ensure secure operation
4. Modular structure allows for easy installation, disassembly, and maintenance
5. Available in carbon steel or stainless steel for high pressure and corrosive environments
6. Customizable according to pipeline diameter, medium, and operational method



- |                                  |                            |                          |                      |
|----------------------------------|----------------------------|--------------------------|----------------------|
| (1) Quick opening closure nozzle | (2) Pressure gauge nozzle  | (3) Cylinder             | (4) Inlet and outlet |
| (5) Safety valve nozzle          | (6) Vent valve nozzle      | (7) Reducer              | (8) Sub-cylinder     |
| (9) Fore saddle support          | (10) Blowdown valve nozzle | (11) Rear saddle support |                      |

