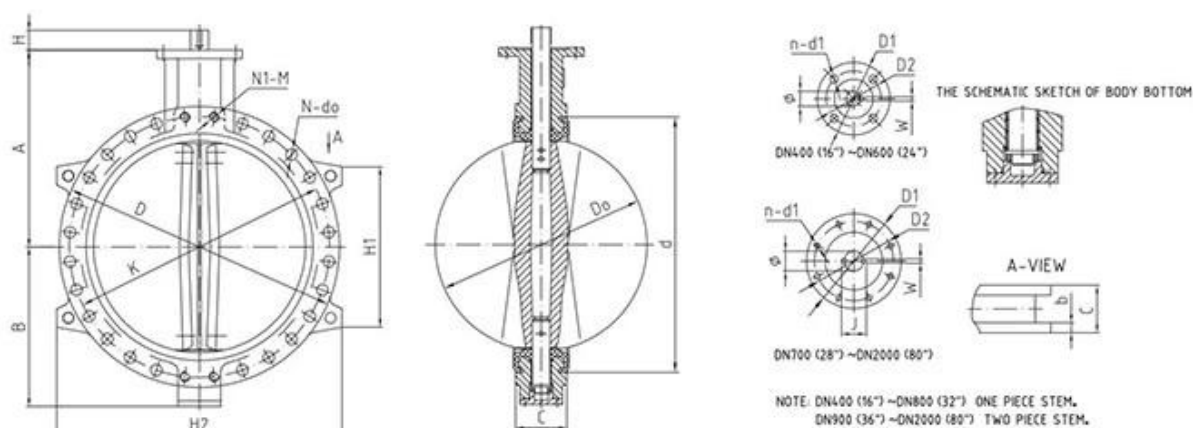


Soft sleeve seated butterfly valve is Wafer pattern with flanges ,the face to face is EN558-1 20 series as wafer type.

Characteristics:

1. Correcting holes are made on flange according to standard, easy correcting during the installation.
2. Through-out bolt or one-side bolt used. Easy replacing and maintenance.
3. The soft sleeve seat can isolate the body from media.

| | |
|-------------------|--|
| Size | DN32 - DN2400 □NPS1 1/4-NPS96) |
| Pressure ratings | PN6 - PN10 - PN16 (Class 150) |
| Temperature range | -40°C-+120°C |
| Material | Ductile iron, Stainless steel etc. |
| Seat material | NBR, EPDM, Nature rubber, Silicon, Viton |
| Connection | Wafer, Lug, U-Section, Double flange |



APPLICATION SCENARIO



Industrial water application



Power plant



Sea water desalination



Water treatment



Water supply and drainage



HAVC



Food and drug



Water transport



COMPANY INFORMATION



I Business area: fluid control products, technology and environmental protection products.

II Advanced CNC machining centers, professional process cells, wide-range welding equipment, automatic assembly lines and coating.

III China's standard reference unit, to participate in the development of relevant valve industry standards.

IV We have set up a research and development center in Houston, Texas, in the United States.

V Product Standard: GB, German Standard, American Standard, TUV CE, ISO 9001, ADWO-2000, TS, PED, WRC WRAS, KTW, API 6D, API609.

VI Main production: [butterfly valve](#), ball valve, gate valve, check valve, globe valves, pipe fittings, manual / pneumatic / electric actuator, valve parts.



01

21 years of professional
experience

03

Independent research and
development team
28 top senior professional
researchers

05

100% high level ex-factory
inspection

07

2 years quality assurance,
repair and replacement

4 factories

02

2 professional testing
centers

04

High quality imported
materials

06

COMPANY QUALIFICATION



COMPANY EXHIBITION





FAQ:

Q: If I need quotation, what informations do we need?

A: Valves' materials, Temperature, Pressure, Medium, Applplication System.

Q: Can you provide actuators, what you have?

A: Pneumatic, Electric, Hrdraulic, Solenoid Valves. RKSfluid actuators adopt USA technology. Which you need, just tell us.

Q: What's your productive capacity?

A: RKSfluid has four plants that can provide the products you need.

Q: Production lead time

A: Normal products have stock in 2~5 working days. Customized base on your need.

Q: MOQ

A: 1pc for all products.

Q: How about the quality assurance?

A: 100% quality test before delivery, 2 years warranty. Ensure your system working safety.

We got TUV, API, WRAS, CE, ISO certification.

Standard conform to DIN, ASME, BS EN, JIS, API, AWWA.

Q: How could you provide quality service to our customers?

A: RKSfluid own 20 years experiences and more than 70 R&D engineers provide technical support, model selection and installation guidance for you.